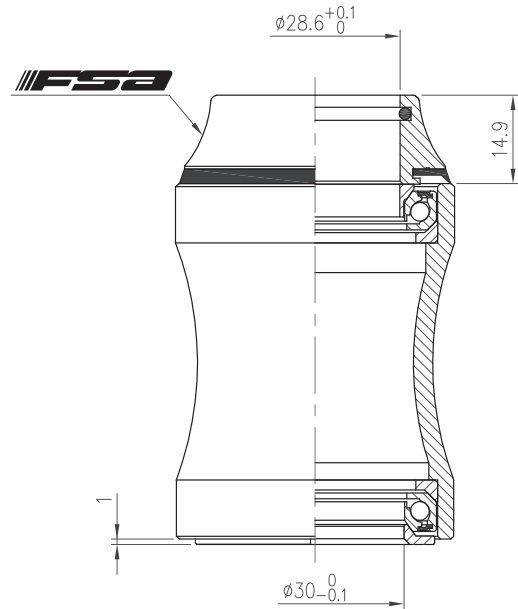
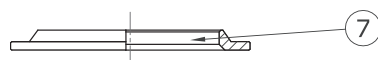
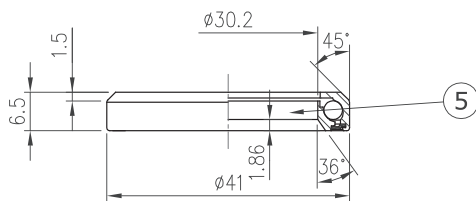
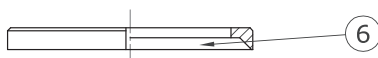
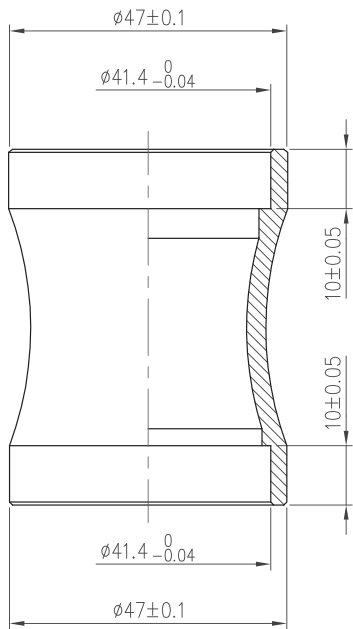
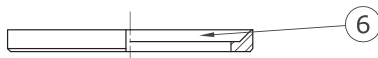
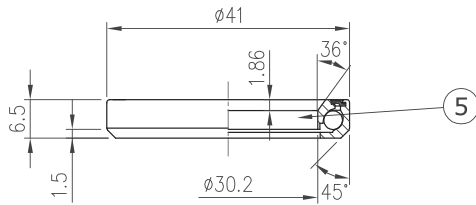
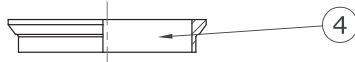
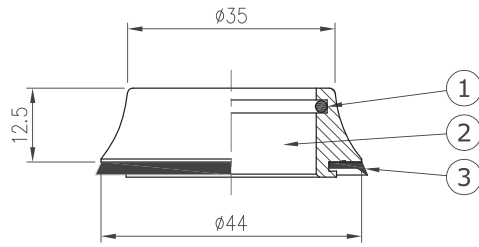


Integrated Headset (CC)

Orbit SPX

NO.26G

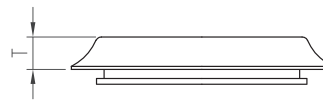
1-1/8", 36°/ 45° ACB



Stack Height 14.9+1=15.9



Weight - 68.9 grams



Custom cone spacer		
Item No	T	Stack Height
H2052G	4mm	7.4mm
H2052A	5.5mm	8.9mm

- For 47mm OD head tube
- 1-1/8" steerer
- Alloy top cover
- Use Alloy HS insert
- Angular Contact Bearing (Black seal)

No	Item No	Material	Qty
⑦	H6036{NO.26G-6}	Alloy	1PCS
⑥	H7027	Alloy	2PCS
⑤	MR122{873E-RS}	Chrome steel	2SETS
④	H2048{WCS-1-1/8"-2}	Alloy	1PCS
③	MS072	Rubber	1PCS
②	H2052B	Alloy	1PCS
①	MS053{872}	Rubber	1PCS

