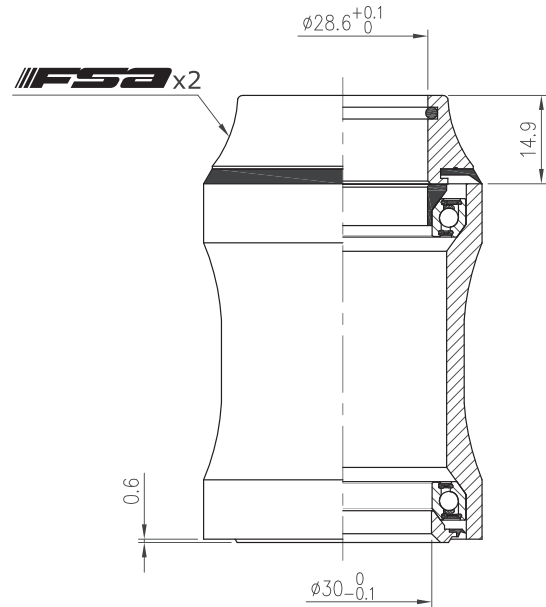
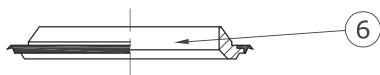
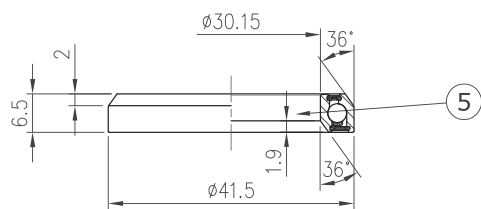
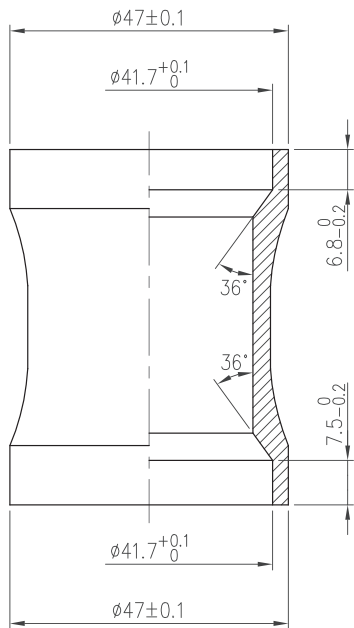
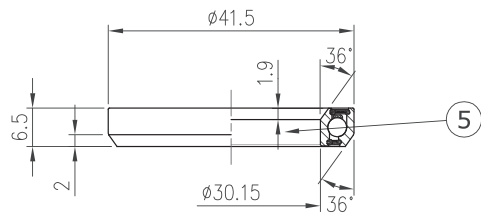
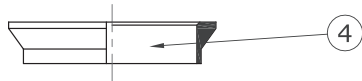
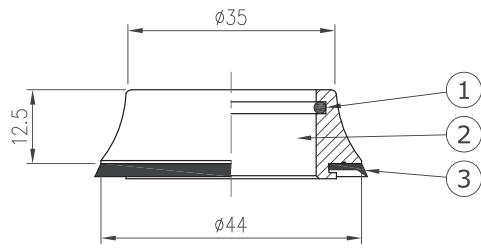


Integrated Headset

NO.9M/TH

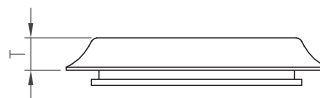
1-1/8", 36°/ 36° ACB



Stack Height 14.9+0.6=15.5



Weight - 70.7 grams



Custom cone spacer		
Item No	T	Stack Height
H2052G	4mm	7mm
H2052A	5.5mm	8.5mm

- For 47mm OD head tube
- 1-1/8" steerer
- Alloy top cover
- Angular Contact Bearing (Black seal)

No	Item No	Material	Qty
⑥	H6052	Steel w/ rubber sealed	1PCS
⑤	MR043{872E-2RS}	Chrome steel	2SETS
④	H2036{NO.5-2}	Nylon	1PCS
③	MS072	Rubber	1PCS
②	H2052B	Alloy	1PCS
①	MS053{872}	Rubber	1PCS

